

Reimagining Justice in Thailand: Towards a Collaborative and People Centered Approach

Special Lecture
by Professor Dr. Kittipong Kittayarak







MOU Signing between Thailand Institute of Justice and UNAFBI

21 Sep. 2016



Reimagining Justice in Thailand: Towards a Collaborative and People Centered Approach









Insights:

Community and broader cross-sectoral collaboration are a powerful catalyst in fostering sustainable human development

Justice needs of a human is not compartmentalized like the structure of the justice institutions.

Principles:

Collaboration

People-Centeredness



Japanese Volunteer
Probation Officer
(VPO) Model



Thai Community
Justice Network

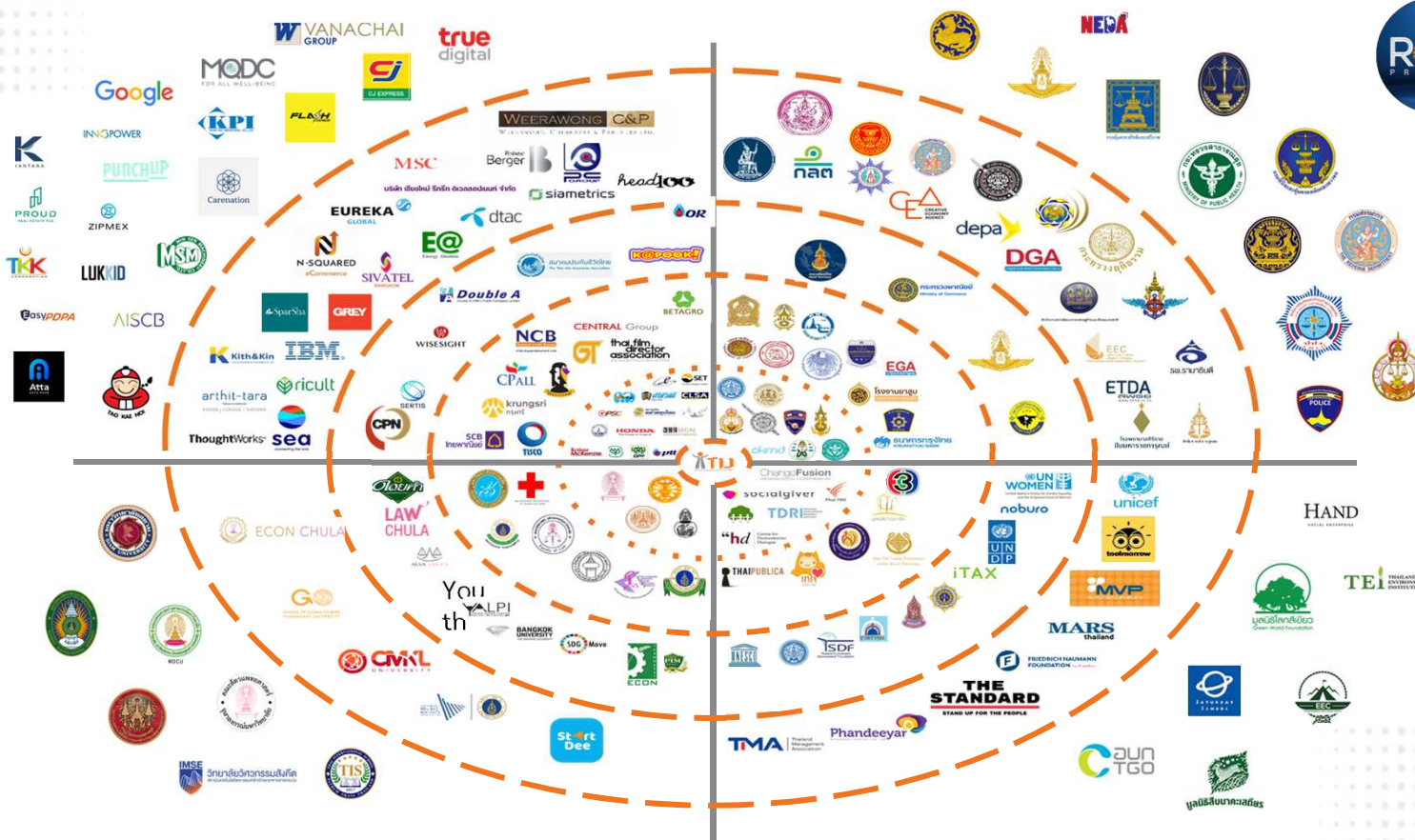


**Strengthen the means of
implementation and
revitalize the global
partnership for
sustainable development**



ROLD
P R O G R A M

Reimagining Justice in Thailand: Towards a Collaborative and People Centered Approach

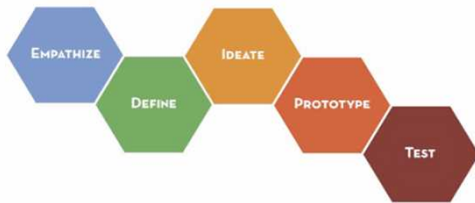




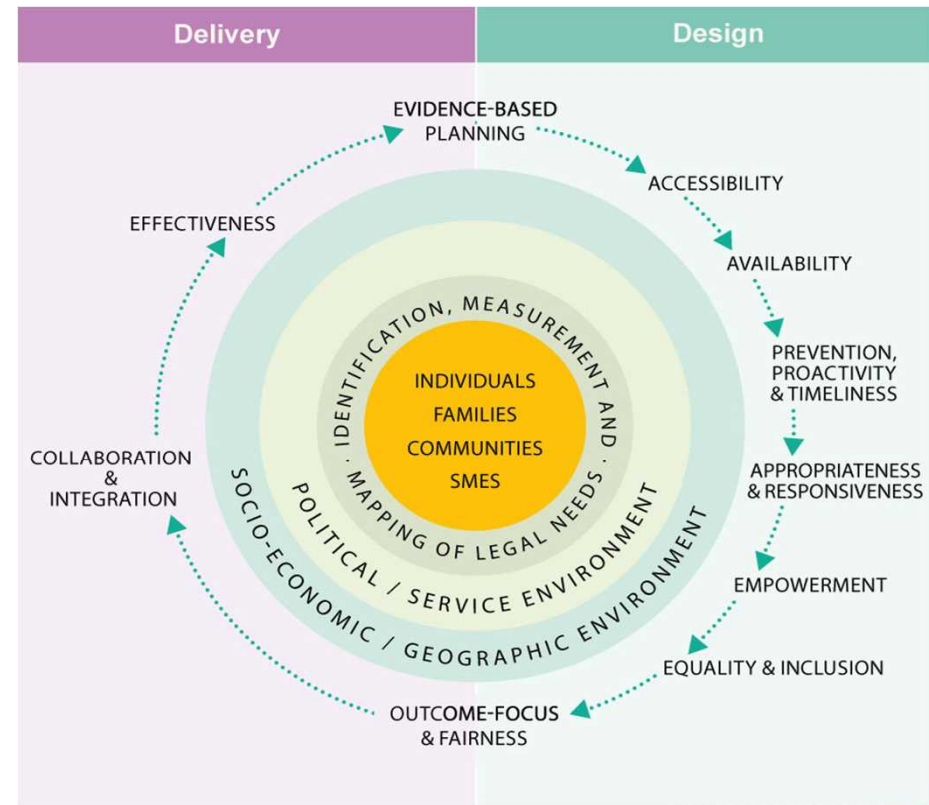
RoLD FELLOWS 2017 – 2022



d. 



Stanford Law School



Showcases:

Reimagining Justice in Thailand

The Bangkok Rules

"The United Nations Rules for the Treatment of Women Prisoners and Non-custodial Measures for Women Offenders"



"Inside Prison"

"Beside Prison"

"Beyond Prison"

Bangkok Rules: Model Prisons



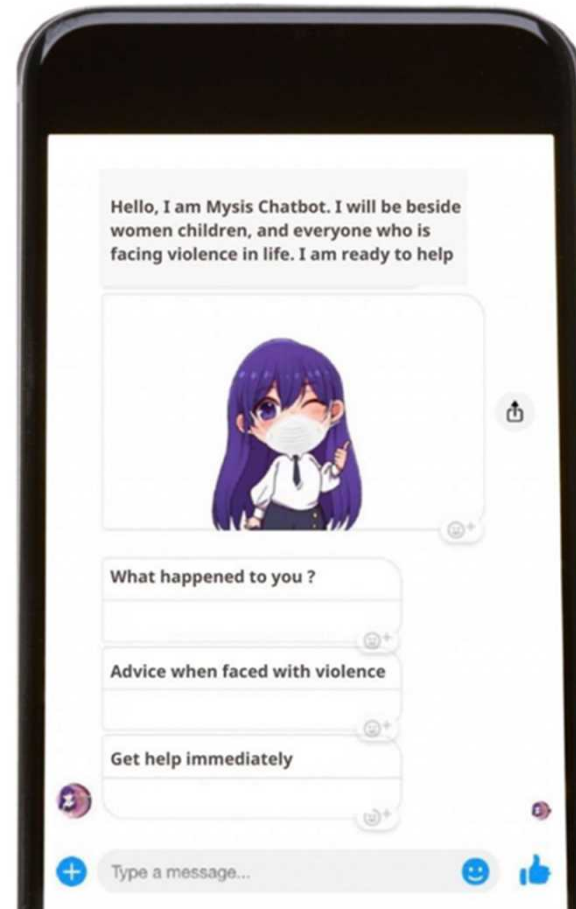
Hygiene Street Food



Smart Police



Justice Innovative Solutions



4 Key Takeaways

#1 Justice ecosystem beyond traditional stakeholders



#2 Justice as a holistic journey of a person's life

Home and
Community

Police, Attorney,
Judges, Court

Correctional Department,
Probation Department

Family, Workplace
and Community

Prevention

Criminal Justice System

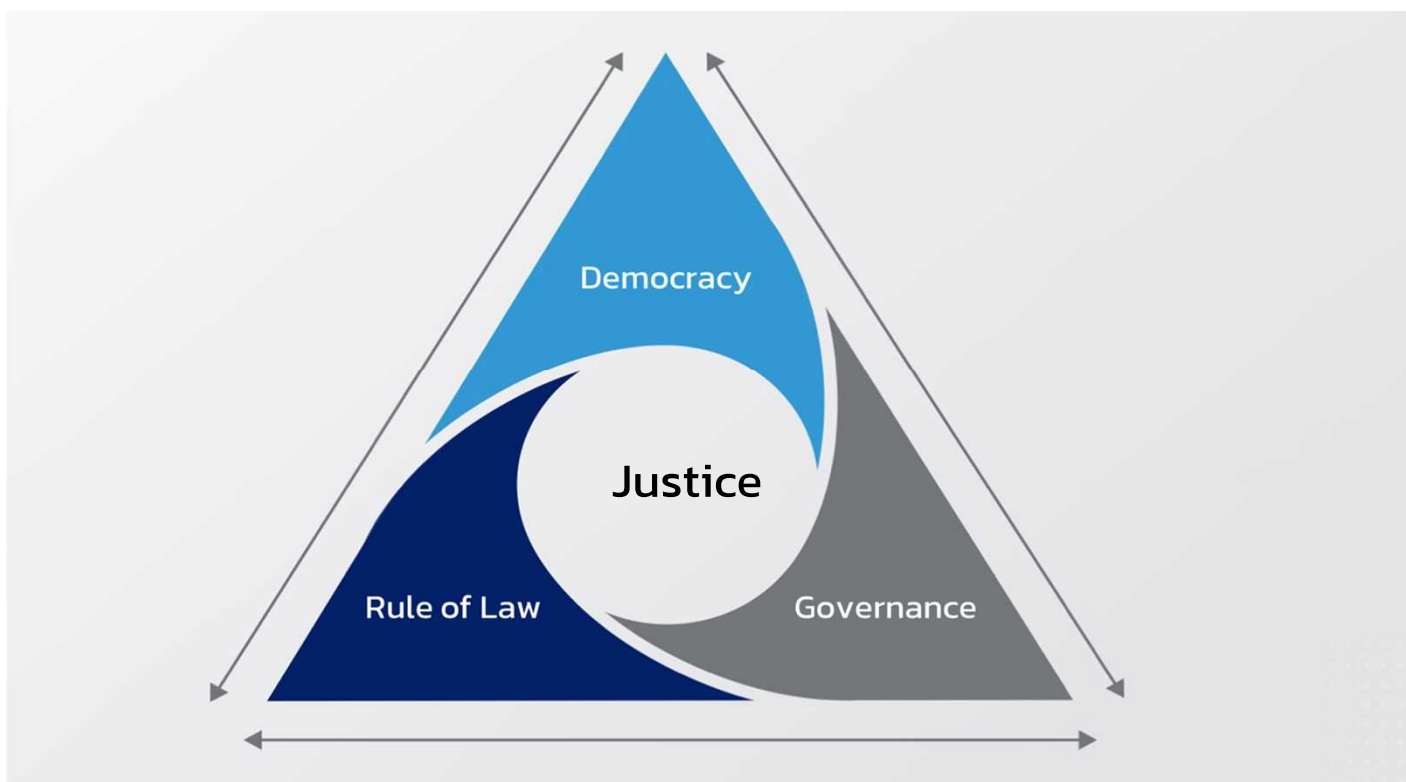
Rehabilitation

Reintegration

#3 Each person's justice needs are unique



#4 Justice, Democracy, Governance and the Rule of Law







Reimagining Justice in Thailand: Towards a Collaborative and People Centered Approach

Special Lecture
by Professor Dr. Kittipong Kittayarak



Q&A